

SUBMITTAL TO THE BOARD OF SUPERVISORS
COUNTY OF RIVERSIDE, STATE OF CALIFORNIA



FROM: County Counsel

SUBMITTAL DATE: August 5, 2003

SUBJECT: Ordinance No. 348.4122

RECOMMENDED MOTION: That the Board of Supervisors adopt Ordinance No. 348. 4122 amending the zoning in the Rancho California Area shown on Map No. 2.2043 Change of Zone Case No. 6690.

BACKGROUND: Change of Zone Case No. 6690 was approved by the Board of Supervisors on July 29, 2003.

Katherine A. Lind
KATHERINE A. LIND
Deputy County Counsel

C.E.O. RECOMMENDATION: **APPROVE**

Lois Brandl

County Executive Office Signature

Policy
 Policy

Consent
 Consent

Department Recommendation:
Per Executive Office:

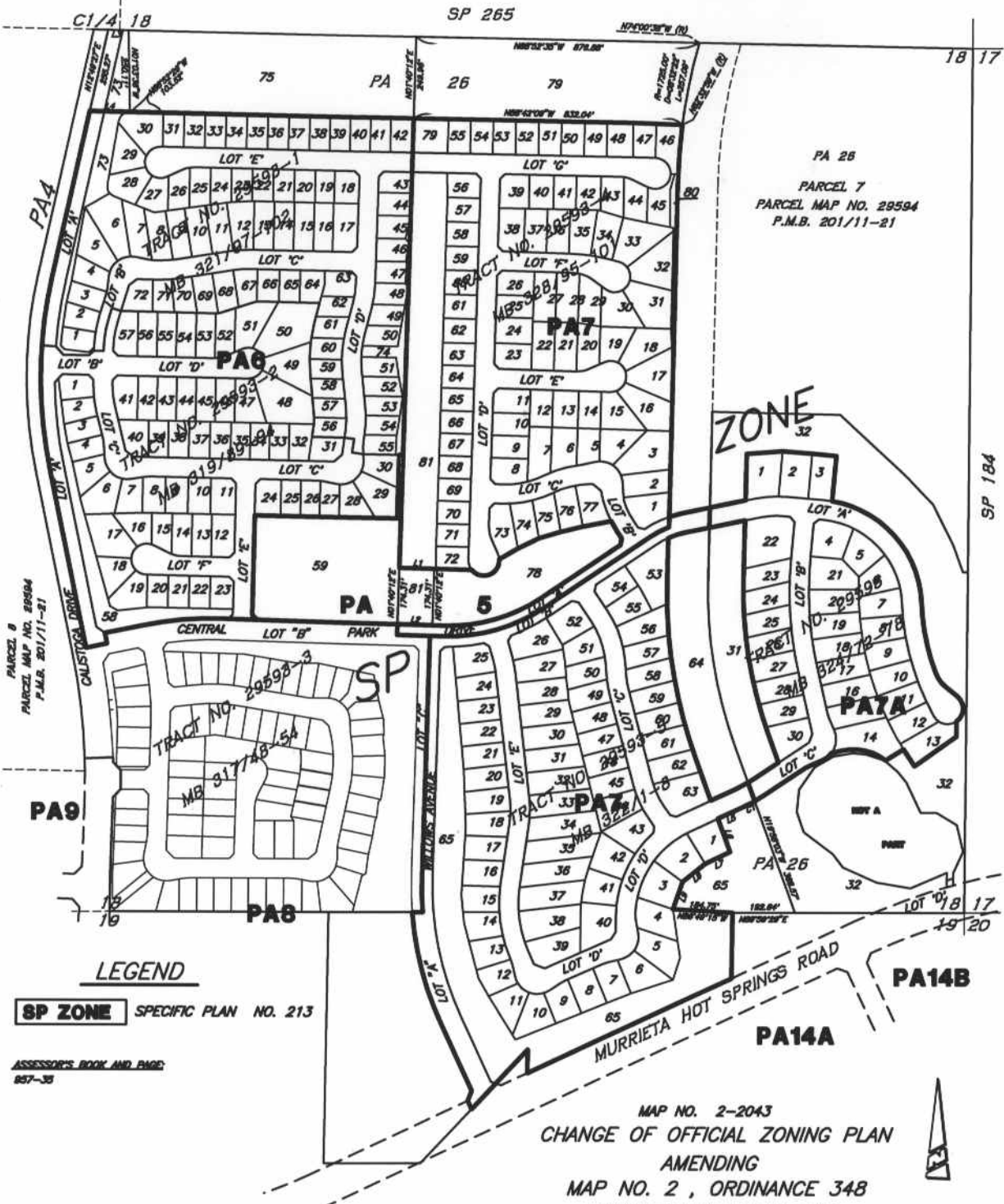
Prev. Agn. ref.

Dist. 3

AGENDA NO.

RANCHO CALIFORNIA AREA

SECTIONS 18 AND 19 T. 7 S., R. 2 W., S.B.M.



LEGEND
SP ZONE SPECIFIC PLAN NO. 213

ASSESSOR'S BOOK AND PAGE
 857-35

LINE DATA	NO.	BEARING	DISTANCE
L1	N87°14'48" W	108.63'	
L2	N87°14'48" W	108.63'	
L3	N89°50'22" W	63.49'	
L4	N89°50'22" W	124.79'	
L5	N82°52'27" E	84.83'	
L6	N112°50'07" W	170.43'	
L7	N45°52'27" E	80.00'	
L8	N82°54'18" E	89.85'	
L9	N18°48'51" E	60.00'	

CURVE DATA	NO.	RADIUS	DELTA	ARC
C1	526.00'	04°30'00"	48.84'	

MAP NO. 2-2043
 CHANGE OF OFFICIAL ZONING PLAN
 AMENDING
 MAP NO. 2, ORDINANCE 348
 CHANGE OF ZONE CASE NO. 6690
 ADOPTED BY ORDINANCE NO. 348.4122

DATE: AUGUST 19, 2003
 RIVERSIDE COUNTY BOARD OF SUPERVISORS

The Keith Companies
TKC
 28820 Cactus Avenue, Ste 300
 Alhambra Valley, CA 91803 (909) 662-0204

Plotted: 8/13/2003 9:25:30 AM By: R. SMITH DWG. NO. 131077.000/View/P3830004 Specific Plan 2043.L210